



Mitsubishi Electric Building Air-conditioner Control System

Central Controller

G-50A/GB-50A *Web Browser Operation Manual (For User)*

Contents

1 Introduction	1
1-1 Conventions Used in this Manual	1
1-2 Computer Requirements	1
2 Setting the Operating Environment	2
2-1 Setting the PC IP Address	2
2-2 Setting the Web Browser	4
3 Performing Operations	6
3-1 Entering the User Name and the Password, and Connecting to the G-50A	6
3-2 Checking the Operation Condition of the Air Conditioner	7
3-3 Performing Air Conditioner Operations	8

**Before using the web browser to monitor and operate the G-50A controller, please read this operation manual carefully to ensure correct operation.
Store this operation manual in a location that is easy to find.**

1 Introduction

A special feature of Mitsubishi Electric Corporation's "Central Controller G-50A" and "Central Controller GB-50A" are that a PC connected to a LAN can be used to monitor the operation condition of air conditioners and perform air conditioner operations.

In this manual, the procedures to monitor the status of and to operate the central controller G-50A and GB-50A on the Web browser are described.

Hereinafter, the central controller G-50A and GB-50A, unless otherwise specified, will be called "G-50A".

Note: License of "Personal Web" is necessary to operate or monitor the air conditioners. Register the license on the registration screen.

1-1 Conventions Used in this Manual

- Unless otherwise specified, "Windows" refers to Windows[®] 98 , Windows[®] Me, Windows[®] 2000 and Windows[®] XP.

Note: Windows is a registered trademark or trademark of Microsoft Corporation USA in the United States and other countries.

- "Click" refers to the action of positioning the mouse cursor on the object (such as button or folder) and pressing down and releasing the left mouse button once.
- Unless otherwise specified, the example screen images used in this manual are Windows XP and Internet Explorer 6.0 screen images.
- The K transmission converter (PAC-SC25KAA) and OA processing unit (LOSSNAY) are not included in systems shipped to North America (USA & Canada).

1-2 Computer Requirements

In order to monitor and operate air conditioners by web browser, your computer must meet the following requirements.

Table 1-1 Computer Requirements

Item		Requirement
CPU		Pentium 133MHz or faster (300MHz or faster recommended)
Memory		64M Bytes or more (128M Bytes or more recommended)
Screen resolution		1024 x 768 or higher recommended
Compatible browser	Windows	Microsoft [®] Internet Explorer 5.0 or later Note: You must have a Java execution environment. (Microsoft VM Ver5.0 or later or Sun Microsystems Java Plug-in Ver.1.4.2 or later). Note: You can check the Microsoft VM version by entering "jview" in a command prompt. Note: You can check the Sun Microsystems Java Plug-in version in "Java Plug-in" in a control panel.
	Macintosh	Safari (with Mac OS X) Note: You must have a Java execution environment. (Sun Microsystems Java Plug-in Ver.1.4.2 or later). You can download from Apple Computer's homepage. Note: You can check the Sun Microsystems Java Plug-in version at the [Help]-[Installed Plug-ins] on the Safari browser.
On-board LAN port or LAN card		One connector (10BASE-T)
Other		Pointing device such as a mouse

Note: Microsoft is a registered trademark or trademark of Microsoft Corporation USA in the United States and other countries.

2 Setting the Operating Environment

Given below is an explanation of the PC settings and web browser settings that are required for using a web browser to monitor air conditioner units and perform operations.

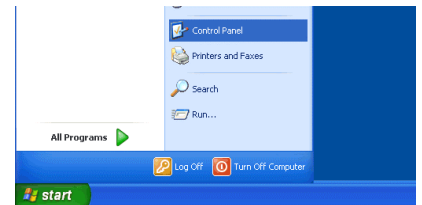
2-1 Setting the PC IP Address

You need to set an IP address on the PC that will enable you to connect to the G-50A using a web browser. For instance, if the G-50A IP address is [192.168.1.1], the PC IP address will need to belong to the same system (for example [192.168.1.101]).

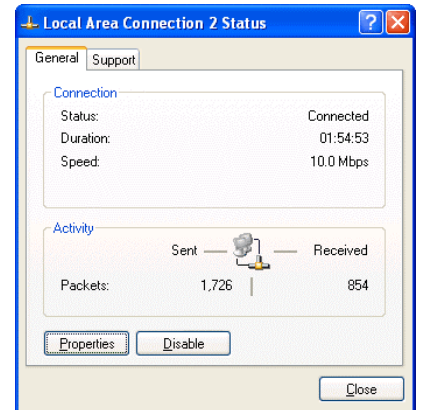
If the G-50A is connected to an existing LAN, ask the LAN administrator to decide what PC IP address to use.

Note: When using a G-50A dedicated LAN, we recommend the G-50A main unit be given an IP address within the range [192.168.1.1] — [192.168.1.40] and the PCs that will be connected to the G-50A be given an IP address within the range [192.168.1.101] — [192.168.1.150]

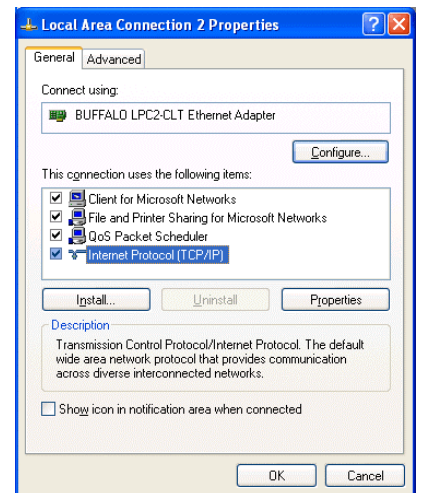
(1) Click on [Control Panel] under [Start] to open the Control Panel.



(2) In the Control Panel window, double click [Network and Dial-up Connections] and the Network and Dial-up Connections window will open. Double click on [Local Area Setting] and the [Local Area Connection Status] dialog will open. Click [Properties].



(3) In the [Local Area Connection Properties] dialog, click [Internet Protocol] to select it and click the [Properties] button.

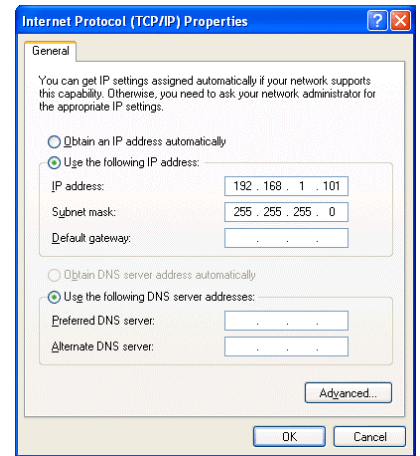


(4) In the [Internet Protocol (TCP/IP) Properties] dialog, click [Use the following IP address] and enter the IP address (for example, "192.168.1.101") that you want to set in the IP address field.

You normally set [255.255.255.0] as the subnet mask.

Note: Ask your LAN administrator to provide the IP addresses and subnet mask.

(5) Click the [OK] button to close this dialog, and then close the other open dialogs to complete the network setting.



2-2 Setting the Web Browser

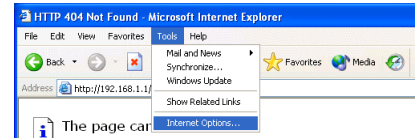
Perform the necessary web browser settings to enable the web browser to connect to the G-50A.

Note: The settings and screen images used as examples in this manual are based on Internet Explorer 6.0.

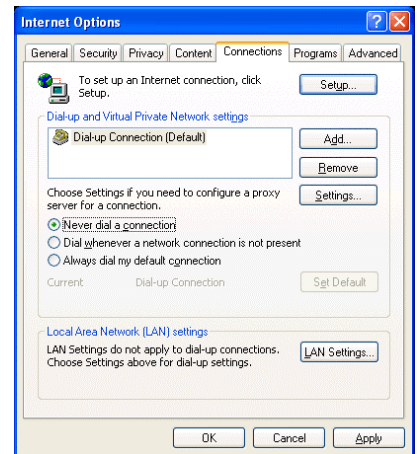
2-2-1 Not connecting to the Internet

If the PC you use for monitoring air conditioners and performing operations is not going to be connected to the Internet, use the procedure given below to set the web browser environment settings.

- (1) Click the web browser menu item [Tools] and then click [Internet Options...]



- (2) In the [Internet Options] tabbed dialog, click the [Connections] tab to display that page.



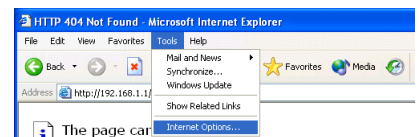
- (3) Select [Never dial a connection] in the Dial-up settings section and click the [OK] button to close the dialog.

2-2-2 Connecting to the Internet using a dial-up connection

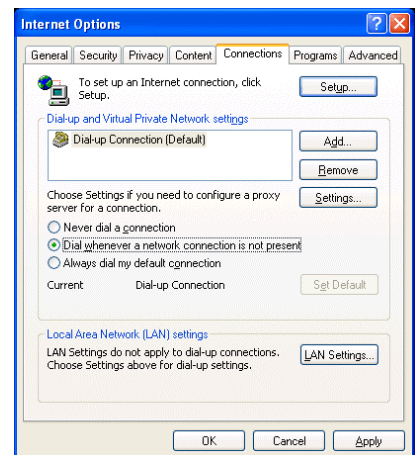
If the PC you use for monitoring air conditioners and performing operations is going to connect to the Internet via a dial-up connection, use the procedure given below to set the web browser environment settings.

By performing these settings, a message will appear asking whether or not to use a dial-up connection when an Internet connection is necessary. In the case when you want to connect to the Internet, connect to the Internet by following the directions of this message.

- (1) Click the web browser menu item [Tools] and then click [Internet Options...]



- (2) In the [Internet Options] tabbed dialog, click the [Connections] tab to display that page.



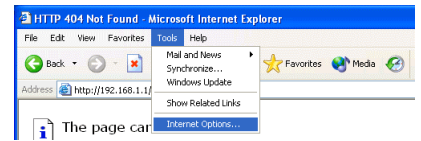
- (3) Select [Dial whenever a network connection is not present] in the Dial-up settings section and click the [OK] button to close the dialog.

2-2-3 Connecting to the Internet using a proxy server (Using an existing LAN)

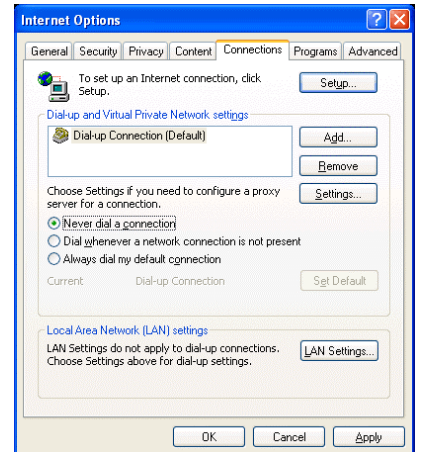
If the PC you use for monitoring air conditioners and performing operations is going to access the Internet via proxy server by connecting to an existing LAN such as a LAN within your company, use the procedure given below to set the web browser environment settings.

By performing these settings, your PC will connect to a proxy server only when connecting to the Internet.

- (1) Click the web browser menu item [Tools] and then click [Internet Options...]



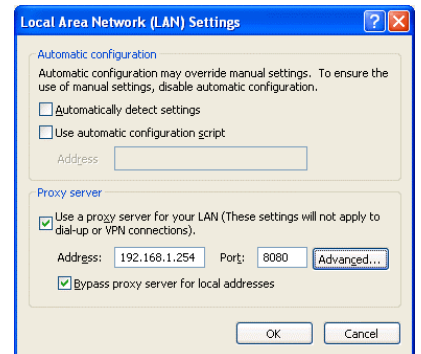
- (2) In the [Internet Options] tabbed dialog, click the [Connections] tab to display that page.



- (3) Select [Never dial a connection] in the Dial-up setting section.

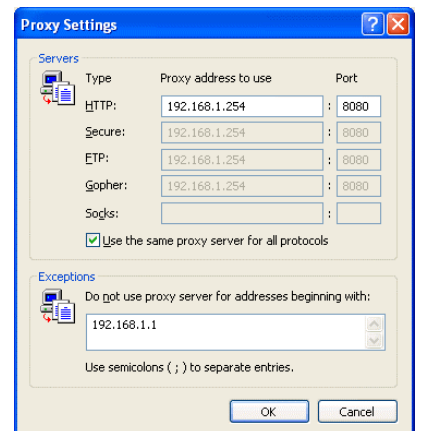
- (4) Click the [LAN Setting . . .] button in the Local Area Network (LAN) settings section to display the Local Area Network (LAN) Settings dialog.

- (5) In the Local Area Network (LAN) Settings dialog, check [Bypass proxy server for local addresses] and click the [Advanced...] button.



- (6) Enter the IP address for the G-50A (e.g. 192.168.1.1) in the Exceptions field of the Proxy Setting dialog and click the [OK] button to close the dialog and then close the other open dialogs to complete the setting.

Note: If connecting to more than one G-50A, you can specify multiple IP addresses like [192.168.1.1; 192.168.1.2], however, it is also possible to use the asterisk (*) and specify [192.168.1*].



3 Performing Operations

Given below is an explanation of how to connect to the G-50A and how to monitor and adjust the operation condition of air conditioners. Follow the directions given here when performing operations.

Note: If the G-50A is restarted due to circumstances like a power interruption, wait until the screen on the G-50A main unit displays the normal operation screen (it takes several minutes before the normal operation screen is displayed) before using a web browser to access the G-50A. If access is attempted while the G-50A is still starting up, the most recent data might not be displayed or communication errors could occur.

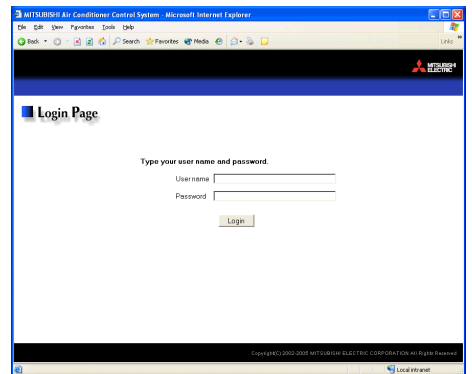
Note: Default IP address of G-50A (GB-50A) is "192.168.1.1". (Factory setting)

3-1 Entering the User Name and the Password, and Connecting to the G-50A

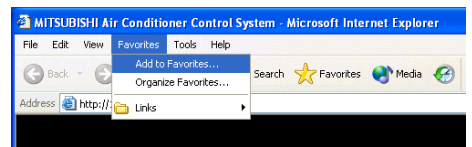
- (1) Enter the web page address in the address field of the web browser as follows and press the [Enter] key on the keyboard. A screen appears for login.

http://[IP address of the G-50A]/index.html

Note: For example, type "http://192.168.1.1/administrator.html" if the G-50A IP address is [192.168.1.1].



- (2) To make it easier to connect the next time, click the web browser menu item [Favorites] and click [Add to Favorites] to select that option and add the address to your Favorites folder. Once this address is added to your Favorites folder, it is not necessary to input the address of (1). You can simply select it from your Favorites folder and the G-50A page will appear.



- (3) Enter the user name and the password in the login screen, and click the [Login] button. The screen for monitoring the operation condition will appear. An explanation on how to perform operations in the normal operation screen begins from the next page.

Note: Consult your administrator for your user name and password.

Note: The Web page is displayed in the same language as the computer uses and it is also possible to display the Web page in other languages by entering the following Web page addresses.

- English : HTTP://[IP address of G-50]/en/index.html
- German : HTTP://[IP address of G-50]/de/index.html
- French : HTTP://[IP address of G-50]/fr/index.html
- Spanish : HTTP://[IP address of G-50]/es/index.html
- Italian : HTTP://[IP address of G-50]/it/index.html
- Russian : HTTP://[IP address of G-50]/ru/index.html
- Chinese : HTTP://[IP address of G-50]/zh/index.html
- Japanese : HTTP://[IP address of G-50]/ja/index.html

3-2 Checking the Operation Condition of the Air Conditioner

When you login correctly using the Login Screen, the screen used to monitor the operation conditions of air conditioners will appear. If you wish to operate an air conditioner, click the icon of that air conditioner to switch to the operation screen.

Note: The operation condition display for air conditioners will not update automatically. If you wish to view the very latest condition, click [Update] on each screen.

Batch operation
Click to perform an operation on all groups at once.

Update to most recent condition
Click to update the screen so that the most recent condition is shown.

Air conditioner icons
These indicate the operation condition of an air conditioner group. Switch to the operation screen by clicking the icon.

Set temperature display
The set temperature is displayed here.

Room temperature display
The temperature of the indoor unit's intake is displayed here.

Operation mode display
The operation mode is displayed here.

Item	Description																								
Update to most recent condition	Click [Update] to ensure the displayed items reflect the most recent operation condition.																								
Batch Operation	Click [Batch Operation] if you want to perform an operation on all groups at once.																								
Air conditioner icon	<p>The operation condition is indicated by the icon that is displayed. When you point to an air conditioner icon with the mouse cursor, the group name is displayed. To switch to the operation screen, click on the icon. The icons used to indicate the operation condition are shown below.</p> <p>(1) Air conditioner group operation condition</p> <table border="1" style="width: 100%; text-align: center;"> <thead> <tr> <th>ON</th> <th>OFF</th> <th>Error</th> <th>Filter sign</th> </tr> </thead> <tbody> <tr> <td></td> <td></td> <td></td> <td></td> </tr> <tr> <th>Interlocked ventilator ON</th> <th>Interlocked ventilator OFF</th> <th>Schedule set</th> <th>Energy saving</th> </tr> <tr> <td></td> <td></td> <td></td> <td></td> </tr> </tbody> </table> <p>Note: The energy saving icon is displayed while the indoor unit group or the outdoor unit that is connected with this group is under energy-saving control. (Before Ver.2.8, the icon is displayed only when the indoor unit group is under control.)</p> <p>(2) Ventilator (Lossnay) group operation condition</p> <table border="1" style="width: 100%; text-align: center;"> <thead> <tr> <th>ON</th> <th>OFF</th> <th>Error</th> <th>Filter sign</th> </tr> </thead> <tbody> <tr> <td></td> <td></td> <td></td> <td></td> </tr> </tbody> </table>	ON	OFF	Error	Filter sign					Interlocked ventilator ON	Interlocked ventilator OFF	Schedule set	Energy saving					ON	OFF	Error	Filter sign				
ON	OFF	Error	Filter sign																						
Interlocked ventilator ON	Interlocked ventilator OFF	Schedule set	Energy saving																						
ON	OFF	Error	Filter sign																						
Operation mode display	The operation mode is displayed here.																								
Set temperature display	The set temperature is displayed here.																								
Room temperature display	<p>The temperature of the indoor unit's intake is displayed here.</p> <p>Note: Because the temperature displayed here is of the indoor unit's intake, it could be different from the actual room temperature.</p> <p>Note: The temperature display can be in either Celsius (°C) or Fahrenheit (°F) depending on the setting.</p>																								

3-3 Performing Air Conditioner Operations

Given below is an explanation of how to perform air conditioner operations.

3-3-1 Performing air conditioner operations that target one group

When you click on an air conditioner icon or ventilator (Lossnay) icon in the operation condition monitoring screen, the operation screen for that group will appear. The items shown in this screen are the current operation conditions. Modify the items you want to change and click [OK] to confirm the operation details. Click [Cancel] to return to the previous screen without making any changes.

Block name
The name of the block is displayed here.

ON/OFF
Click to switch to ON or OFF.

Operation prohibition mark
If the prohibit setting has been set for an operation, the prohibition mark will be displayed.

Operation mode
Click to switch the operation mode.

Set temperature
Click to adjust the set temperature.

Air direction
Click to adjust the air direction.

Filter sign
Click to reset the filter sign.

Cancel button
Click to cancel all operations.

Group name
The name of the group is displayed here.

Central control mark
This is displayed when the units are centrally controlled.

Interlocked ventilator ON/OFF
Click to switch interlocked ventilator ON or OFF.

Fan speed of interlocked ventilator
Click to adjust the fan speed of the interlocked ventilator.

Fan speed
Click to adjust the fan speed.

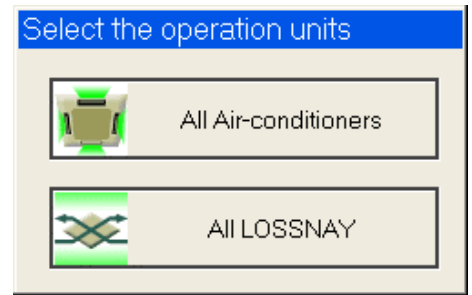
OK button
Click to confirm the operation details. You must press the OK button for the operation to take effect.

Item	Description
ON/OFF	Click [ON] or [OFF] to switch to ON or OFF.
Operation mode	Click [Cool], [Dry], [Fan], [Heat] or [Auto] to switch the operation mode. If it is a ventilator group, select [Bypass], [Heat Recovery] or [Auto]. Note: Some unit models do not support certain operation modes. Unsupported operation modes are not displayed. Note: For K control models, all modes are displayed, however, choose only the modes that can be operated.
Set temperature	Click to adjust the set temperature. For [Cool] and [Dry], the setting range is 19 ~ 30°C/67 ~ 87°F, for [Heat] it is 17 ~ 28°C/63 ~ 83°F, and for [Auto] it is 19 ~ 28°C/67 ~ 83°F. Note: The temperature setting range varies depending on the unit model. Note: If the setting range for set temperature is restricted, the temperature setting range will be smaller. Note: If it is a ventilator model, this item is not displayed.
Air direction	Click to adjust the air direction. Note: If it is a model that does not support air direction adjustment, this item is not displayed. Note: If it is a model that does not support the swing feature, the swing option is not displayed. Note: The temperature display can be set to display in either Celsius (°C) or Fahrenheit (°F).
Fan speed	Click to adjust the fan speed. Note: If it is a model that does not support fan speed adjustment, this item is not displayed. Note: The number of available fan speeds will be 2 settings, 3 settings or 4 settings, depending on the number of fan speeds supported by the model.
Filter sign	Click [Reset] to specify whether to reset the filter sign. It is set to reset when a green indicator is displayed on the left of Reset ([Reset]). Note: If filter signs are not triggered in the group, then this item is not displayed.
Interlocked ventilator ON/OFF	Click [ON] or [OFF] to switch interlocked ventilator ON or OFF. Note: For groups that are not connected to an interlocked ventilator, the items related to interlocked ventilators are not displayed.
Fan speed of interlocked ventilator	Click to adjust the fan speed of the interlocked ventilator. Note: For groups that are not connected to an interlocked ventilator, the items related to interlocked ventilators are not displayed.
Operation Prohibition mark	When air conditioners are centrally controlled, the central control mark will be displayed, and if the prohibit setting has been set for any operations, the operation prohibition mark () will be displayed next to those operation items. If the prohibit setting has been set for an item, it is not possible to operate that item.

3-3-2 Adjusting the operation conditions of every group

- (1) Click [Batch Operation] from the operation condition monitoring screen for air conditioners. If there are air conditioner groups and LOSSNAY groups mixed together, a selection screen will appear with the choice of all air conditioners or all LOSSNAY. Click either [All Air-conditioners] or [All LOSNAY] to make your selection and the screen for batch operation will appear.

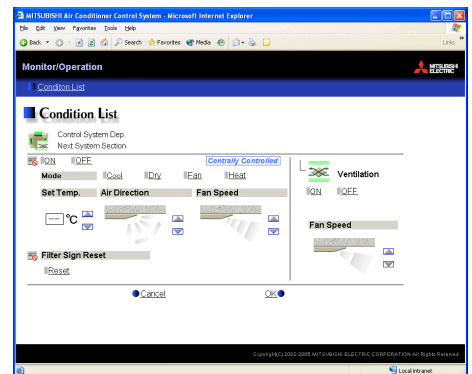
This selection screen will not appear if there is only air conditioner groups or LOSSNAY groups.



- (2) After you have made the settings on the screen for batch operation, click [OK] and only the items for which operation was performed will be sent to all the air conditioner units. To return to the previous screen without performing any operations, click [Cancel].

Note: If the setting range for set temperature is restricted, the temperature setting range will be smaller.

Note: If operation of an item has been prohibited, then operation is not possible for that item.





HEAD OFFICE: MITSUBISHI DENKI BLDG., 2-2-3, MARUNOUCHI, CHIYODA-KU, TOKYO 100-8310, JAPAN